

# former TIMES

GLAMORGAN SPRING BAY HISTORICAL SOCIETY INC.

ISSUE 13

FEBRUARY 2018

22 Franklin Street  
Swansea TAS 7190

OPEN 10AM – 4PM TUESDAYS & FRIDAYS

☎ 6256 5077 ☎ 6257 9011

## *Houses & Estates of Old Glamorgan*

SALES AFTER INAUGURAL OPENING

**T**HE SOCIETY'S LATEST PUBLICATION *Houses & Estates of Old Glamorgan* was launched in early December last year.

The launch, at the Allport Library in Hobart was performed by Her Excellency, Professor, The Honourable Kate Warner AM, Governor of Tasmania. Ian Boersma, Heritage Tasmania Works Manager and our architectural technical advisor for the book, conducted the book launch for us in Swansea.

In this issue there are photos of the launches (over page), and some insight into the process of putting the book together (page 7). Whilst it is the three authors, Maureen Martin Ferris, Malcolm Ward & Tully Brooks, and main photographer, Marion Harrison, who should take most of the kudos for the book, others had a hand in the production, Diane Bricknell who did the design and desktop publishing, Lou Coghill the editing, Noel Stanley the financial work and organising the printing, and lastly the rest of the Publishing Committee for their advice and excellent proof reading.

In addition the Society wishes to thank Ian Boersma, Ross Latham from Tasmanian Archive & Heritage Office, Heather Excell and Wendy Rimon from Special and Rare Collections at UTAS for their assistance.

The Society printed approximately 100 of the Special Collector's Box Edition of the book and 1000 of the soft 'gate-fold' cover version. All the owners of properties included in the book have received their complimentary copies and also the Society fulfilled compulsory lodgement obligations with various libraries.

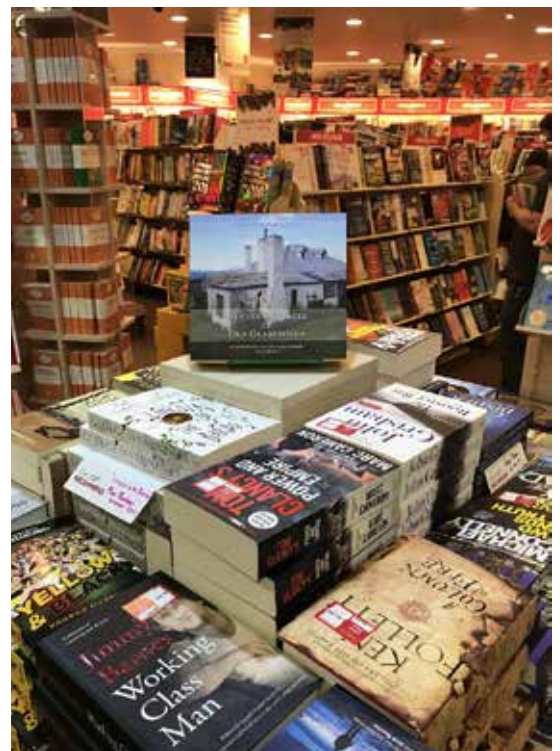
It is extremely pleasing to report that all 100 copies of the Collector's Edition are now sold, and further, of the 1000 soft cover edition, we have only 330 copies left in stock.

As a result this puts the Society on a strong financial foothold to be able to finance our Publications Projects into the future. This will include in the short term a reprint of *Kettle on the hob: a family in Van Diemen's Land, 1828-1885* by Frances Cotton, and in the longer term Louisa Anne Meredith's *My Home in Tasmania*. Both these books are now out of print.

Of course our Authors are keen to start work on the next edition of *Houses & Estates of Old Spring Bay*.

If you have not already secured your copy of the book, I suggest you get in quick before this too becomes "Out of Print" !!

Peter Hüttemeier  
Secretary GSBHS.



Our *Houses & Estates* book featured in prominent position for Christmas sales at Dymocks in Hobart!



A stack of *Houses & Estates* books at Fullers, ready for Christmas sales





*HOBART LAUNCH – 11 DECEMBER 2017*



*SWANSEA LAUNCH  
12 DECEMBER 2017*





## EXHIBITION AT THE EAST COAST HERITAGE MUSEUM

This exhibition has focussed on some of the families who lived, worked and played in the buildings in the book *Houses & Estates of Old Glamorgan*.

### The Allen family

JOHN ALLEN was born 1806 in Somerset, England. He arrived in Van Diemen's Land with his uncle Richard on the *Hugh Crawford* in 1826 to join his brother Joseph. During the voyage the family developed a friendship with the Lyne family, who also settled in Great Oyster Bay.

John chose land on the southern banks of the Cygnet River situated on the outskirts of Cranbrook, naming it *Milton* after his home village in Somerset.

John's brother Joseph Allen purchased *Milton* and John then moved north to the Douglas River. In 1842 John married Ann Eliza Baynton and they had four children. John had a further thirteen children with servant Anne Bell.

*The Springs*, situated on the northern banks of the Wye River, was the property settled by Richard Allen. He was described as an excellent carpenter when the Land Commissioners visited in 1828.

Richard's son Edwin purchased *The Springs* in 1837. Edwin married local girl Susan Makepeace in 1854.

### The Cotton family

Francis Cotton was born 1801 in Hackney, London to Thomas and Mary Cotton. He was educated at the Religious Society of Friends (Quakers) school Ackworth. Francis was apprenticed to a builder and carpenter. Later he set up his own drapery business. In 1821 Francis married Miss Anna Maria Tilney, a Presbyterian from Kelvedon in Essex. Because he married outside his religion he



John Allen



Francis and Ann Cotton Portraits

(Courtesy University of Tasmania Library, Special and Rare Collections)

was disowned by his Quaker family. With the opportunity of brighter prospects in the new colony of Australia, Francis, his family and his childhood friend Dr George Fordyce Story set sail on the ship *Mary* in 1828 bound for Sydney, New South Wales.

After a long and arduous journey the ship put in to Hobart Town for repairs and supplies and the family decided to see what Van Diemen's Land had to offer. For a period Francis set himself up as a builder in Hobart Town. He then began the search for a suitable land allocation in the Midlands area but found nothing. Meanwhile Dr Story obtained the position of Assistant Surgeon at the new East Coast settlement of Waterloo Point so Francis travelled there seeking land. The area at this time was experiencing attacks from bushrangers and Aborigines so things were hard for new settlers. Francis selected land south of Swansea and was described:

*"flat, stony, indifferent soil varying in width from one mile to two, when it rises into barren useless tiers."*

He names his property *Kelvedon*.

The Cottons kept diaries, letters and accounts which describe their many trials and tribulations. During a visit from the Quaker missionaries, James Backhouse and George Washington Walker, the family was reinstated. They established themselves with the Quaker community in Hobart and Launceston. In 1852 noted Quaker Frederick Mackie on his tour of the Australian Colonies visited and sketched *Kelvedon*.

Francis was a trusted and upstanding citizen. A member of the Glamorgan Road Trust, agent for the East Coast Steam Navigation Company and first Treasurer of the Glamorgan Municipal Council. Later he was appointed auditor for the Spring Bay Municipality. Francis declined the office of Justice of the Peace because the Quaker religion had a rule against oath-taking.

The Cotton family retained a lifelong friendship with Dr Story, who never married and lived with the family at *Kelvedon*.

## The Meredith family



*Sketch of George Meredith with his whaling harpoon*

George Meredith (1777-1856) arrived in Van Diemen's Land on the ship *Emerald* in 1821. He was born in Birmingham, England; the son of John, a barrister & solicitor and Sally Meredith.

Meredith presented letters of introduction to Lieutenant Governor William Sorell seeking a suitable 2,000 acre grant of land. The East Coast offered promising land situated at Oyster Bay.

It was not long before George and his family established their grant on a river (Meredith River) North of Swansea, naming it Cambria. The first house, *Creek Hut*, was built on the Southern bank of the river (Redbanks' side); it was constructed of timber with thick walls rammed with turf and mud.

Meredith was a dominating and imposing figure in the district and it was not long before he fell out with his neighbour William Talbot (and others in the area) over land. Governor Sorell made the statement '*Can Meredith expect that everybody should be at a Stand Still until it suits his convenience to chuse (sic) his land?*' Records indicate he was referred to as the '*King of Oyster Bay*'.

Meredith was a shrewd businessman; he knew the value of whaling in and around Oyster Bay and the Freycinet Peninsula. He set up many whaling stations and greatly expanded his empire.



*John Mitchell*



*Catherine Mitchell (nee Keast)*

## The Mitchell family

JOHN MITCHELL was born in St German's, Cornwall in 1812. In 1837 he came to Van Diemen's Land as a surveyor. Shortly after his arrival he was offered a government post as superintendent of the boys at Point Puer.

His fiancée Catherine Augusta Keast also from Cornwall, arrived in the colony in 1839. Catherine and John married at Holy Trinity Church, Hobart in October 1839 before settling at Point Puer, where children Francis Keast, Henry John and Frederick Keast were born. Both Francis and Henry died young, and are buried on the Isle of the Dead, Port Arthur.

John left his government post and purchased a farm at South Arm, then moved to the estate of *Villeneuve* (now *Twamley*) near Buckland. When the opportunity arose to purchase the estate of *Lisdillon* on the East Coast, John jumped at the challenge and once again the family moved to what would be their last residence.

*Lisdillon* was a farm of about 900 acres, James Radcliffe had been leasing the property from Mr Champ. *Lisdillon* grew into a small village with Cornish workers employed as tenant farmers. John built a school/church, teachers cottage (Rose Cottage) which also became the post office. Miss Allen was appointed school mistress and postmistress. Small cottages popped up everywhere.

By 1854 the family had grown, with John and Catherine having a further eight children: Frederick, Frank, Catherine, Edwin, Paul, Mark, Sarah & Amy.

Upon the death of his neighbour Thomas Buxton in 1865, John purchased the estate of *Mayfield* and expanded his holdings. Workers cottages were built and an impressive oast house. The mill at *Mayfield* was a major asset to the estate.

John Mitchell represented the municipality of Glamorgan as a M.H.A. for 11 years and was a highly respected member of the community.



## The Mitchelmore Radford & families

JOHN RADFORD was a convict from Devon, transported on the *Lady Castlereagh* in 1818 for stealing notes and cash.

During the 1820s John was employed as a stock-keeper for Silas Gatehouse at Grindstone Bay. He settled a short distance away at *Muirland*, Little Swanport.

In 1833 John married Mary Ann Buxton at St David's Church in Hobart. Mary Ann was the daughter of Thomas Buxton of *Mayfield*. The Radfords operated the original *Muirland* homestead as an inn during the 1840s - 1860s. Louisa Anne Meredith wrote of an overnight stay at the small inn during a trip in 1841.

JOHN AND MARY ANN died within a week of one another in January 1883, that same year *Muirland* was put up for sale. The purchaser was their nephew Peter Hilton Mitchelmore, son of Peter Mitchelmore and Fanny nee Buxton. This building was washed away in the 1929 floods.

The present house, situated on the opposite bank from the original farm, was built for Mitchelmore in 1908. It operated as the Little Swanport Post Office, telephone exchange and a place where guests could stay and enjoy bream fishing in the Little Swanport River.

## The Lyne family

WILLIAM LYNE, wife Sarah and family arrived in Van Diemen's Land on the *Hugh Crawford* in 1826. On the recommendation of Lieutenant-Governor Arthur, William and one of his sons went to the Great Swanport district to claim land, being advised to avoid those areas legitimately claimed by George Meredith.

They selected land close to Moulting Lagoon near the head of Great Oyster Bay. William named his property *Apsley* after Lord Apsley. Their first home was a turf and sod hut for cooking and eating, then a stacked log hut for sleeping.



Fanny Mitchelmore  
(nee Buxton)



John Radford



William Lyne Senior



Edward Carr Shaw

JOHN LYNE, ELDEST SON OF WILLIAM & SARAH, married Lillias Hume in 1843. They moved into *Apslarwn*, a short distance from *Apsley*, around this time. They had five children, the eldest was William John (1844-1913).

William is well known in Australian politics, serving as a member of the Tasmanian House of Assembly, later as Premier of New South Wales and, on Federation, served in the first Federal cabinet under Barton.

*Coombe End* was another Lyne estate. Henry Lyne, the third son of William and Sarah, married Mary Amos and lived there with their ten children.

## The Shaw family

EDWARD CARR SHAW was one of eleven children of Irish solicitor Bernard Shaw and his wife Frances (nee Carr). Edward was born at Terenure, Dublin in 1813 and arrived in Van Diemen's Land on the *Eagle* in September 1830.

In 1835 Edward married Miss Ann Fenton in Hobart; they went on to have nine children. Ann died in 1856 and Edward then married Miss Emma Goodall Cope and they had two children. The family settled at *Red Banks*, situated on the southern bank of the Meredith River, so named after its red alluvial soil.

THE SHAW FAMILY became well represented in local and state political circles. Edward was appointed Commissioner of the Peace in 1839 and Coroner for the district of Glamorgan in 1840. He was Returning Officer in the first Glamorgan election in 1860. His son Bernard featured in state parliament as Commissioner of Police and Secretary of Mines.

Other Shaw residences were *Bluff Cottage* (also known as *Harbottle's Cottage*) and *Terenure*; the latter was built in 1909 fronting the Tasman highway.

Today Red Banks is still farmed by the Shaw family.

## WHY EVERBEST?

RECOGNISED as one of Asia's foremost printing houses, Everbest Printing Company strives to keep its reputation of producing printed products of finest quality.

Everbest Printing Company Limited was founded by Mr James Chung in 1954. In 1997, to streamline its operations, Everbest shifted its entire book production facility to Nansha, China, whilst maintaining its sales and marketing office in Hong Kong.

In July 2002, Everbest reached another milestone when it entered into a joint venture partnership with Times Publishing Limited, Singapore.

By 2007, Everbest was fully owned by Times Publishing Limited.

With the completion of the company's phase III expansion in 2009, another 300,000 sq. ft. of floor space was added to the former 250,000 sq. ft. factory.

The Everbest tradition of delivering meticulous service is deeply entrenched in the company's day-to-day operations. Superior quality control procedures at all stages of the production process ensure that

every piece of work is checked rigorously before delivery to its final destination.

With a skilled workforce of some 800 in Hong Kong and China and investment in high output machines, Everbest's dedication to perfection has seen many of its products winning many prestigious international book production awards.

The committee opted to use Everbest for the printing of *Houses and Estates of Old Glamorgan*, primarily from our experience with the company in printing *Some of My Bush Friends*. The quote was not the cheapest, but was certainly a fair and reasonable price given the final product. We also have our dedicated account manager and contact, Sau Kuen Wong, who handles our account, a good communicator who puts up with a barrage of queries from the committee members and very patiently gets us through the ordering process.

Members may not appreciate that there are many decisions made especially by the Graphic Designer that ultimately affect the price and quality of the final book, details as to the kind of paper, the weight, colour, and finish, the headband ribbons, the ink and embossing, the page finish and the cover finish. In the case of *Houses & Estates of Old Glamorgan* we did get to 4 Order forms/Contracts before giving the final go ahead to print so the collaboration is working in the case of *My Bush Friends* I think we got up to 8, perhaps we are all getting better at this publishing lark.

*Noel Stanley (Treasurer and publishing committee member)*



*Everbest Hong Kong - behind the scenes*

*Everbest Chinese headquarters*





# The process from your Graphic Designer/Desktop Publisher

BY DIANE BRICKNELL

Putting together *Houses & Estates of Old Glamorgan* started many years ago. I sat down with Elaine Rushbrook and we came up with a preliminary design, this was before Elaine moved away and was not involved in the project.

Having so much content to work with makes a project like this very enjoyable, large old maps from the area, beautiful old photographs of domestic scenes and architecture all sit in the archives of our Historical Society, Museum and State Museums like TMAG and the National Library of Australia to name but a few.

This project started in February 2011 with an initial concept for basic page layout and font choice submitted to the Publishing Committee (see below).

The wallpaper from Cranbrook House for instance was found by the current Amos family during renovations, and samples were kept and came to light during conversations with Jennie Amos. The book design was really starting to take shape, a colour scheme was already chosen, so the magic of computer graphics came to the



rescue and the tones of the original on the left were altered to suit the book design, then the small sample was copied and melded to produce a larger section of wallpaper (the sample on the right appears in the softcover book).

After many starts and stops in the whole book process

The book continued to evolve, with the Authors Malcolm Ward and Maureen Martin Ferris digging up more and more information about these old houses and finding imagery that was very old, but new and exciting to us at the time!

Because a lot of these old houses are still inhabited by the same family descendants that were the original settlers, finds like old wallpaper and photos surfaced during the early stages of the project.

due to illness (my successful battle with breast cancer in 2013) and other reasons, the book finally made it to the printing stage in 2017.

Everbest Printing Company based in Hong Kong were chosen, as we had used them for *Some of My Bush Friends in Tasmania*, and my other clientele had printed other publications with huge success in years past. Their prices were really good and print quality second to none.

The end result of *Houses & Estates of Old Glamorgan* is a beautifully presented book, personally my involvement with the Society over the last 12 years has been informative and full of laughter, friendship and education, producing this artwork has been a labour of love for me.

*"History is a pack of lies about events that never happened told by people who were not there"*

GEORGE SANTAYANA, 20TH CENTURY AMERICAN PHILOSOPHER

# Photographic Award Competition



**A** flier for the Ray Lewis Perpetual Photographic Award for Primary/Secondary School Students is attached with this Former Times. If you know a student resident in Glamorgan Spring Bay area who is interested in Photography, please let him/her know about this Competition. The competition period will be over Term 2 for Tasmanian Schools, Entries for 2018 Award will open on Monday 30th April and Close Friday 6th July.

Judging will take place and the Winners, one for Secondary School Students and one for Primary School Students will be announced early in Term 3. It is planned that an exhibition of the winners and other photos will be held in East Coast Heritage Museum at this time.

For more details please contact Secretary GSBHS.

## Society Matters

### MEMBERSHIP

**M**embership: We welcome one new Member and one returning member, Luana Nandan (of Swansea) and Louise Coghill (St Helens). Current membership stands at 96, a very healthy number.

**A PLEA FOR HELP:** The Society badly needs Volunteers to help with our data entry and transcription of records. This will include training on our Mosaic database, some work will be able to be done at home. This is a great way to help the Society and to learn what records and data are available. Some Computer knowledge is required. Please talk to Vice President Maureen or Secretary Peter if you can help.

FROM THE SECRETARY  
– PETER HUTTEMEIER

## Visitors to Swansea



*Look who I bumped into! A longtime previous member of the Society Colin Campbell came by for a visit to the Museum on Friday 9th February, he is looking great and loved the latest exhibition.*

*Diane Bricknell.*

